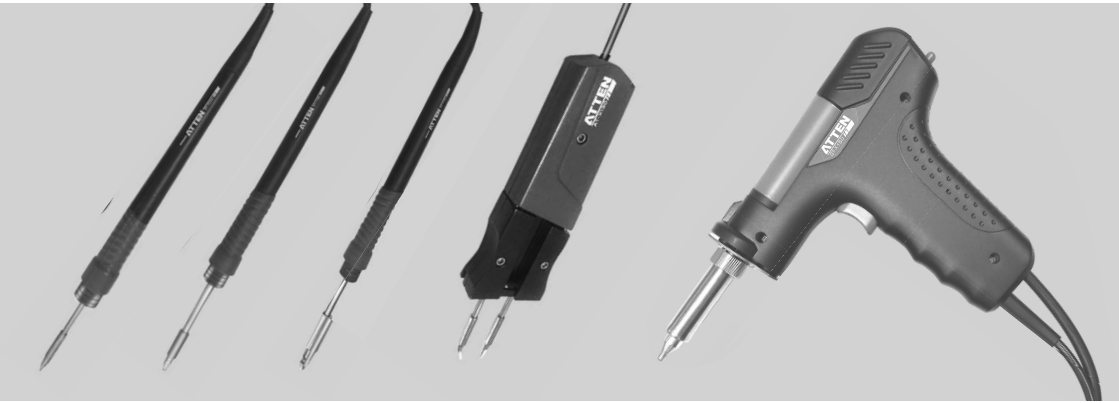


ATTEN



GT-Y150, GT-Y130, GT-Y050, GT-N100, GT-X150 Instruction Manual

SHENZHEN ATTEN TECHNOLOGY CO., LTD.

Contents



Copyright information	2
Description of common icons	2
Essential knowledge for users.....	2
Safety precautions	2
Disclaimer	2
Packing list.....	3
Correct placement mode of the handle	5
Connection mode	6
Replacement of heating element.....	7
Replacement of cleaning sponge or steel wool	9
GT-X150 daily cleaning	10
Model and specification of integrated heating element	11
Daily use and maintenance	13

Copyright information

The design of this product (including internal software) and its accessories is under the protection of relevant state laws. Any violation of the relevant rights of our company will be subject to legal sanctions. Users shall consciously abide by the relevant state laws when using this product.

Description of common icons

Thank you for using our products. Before using the product, please read this manual carefully and pay attention to the relevant warnings and cautions mentioned in this manual.

 Warning	Misuse of this product may lead to serious injury or death to the user.
 Caution	Misuse of this product may lead to serious injury to the user or material damage to the object involved.

Essential knowledge for users

Users are required to have basic knowledge of common sense and electrical operations before using the product. Minors shall use the product under the guidance of a professional or guardian.

[Caution]: To avoid damaging the equipment and keep the safety of the operational environment, please read this manual carefully and keep it well before use so that you may read it at any time when necessary.

Safety precautions

To avoid electric shock or injury to the human body or fire hazard, the following basic rules must be observed when using the equipment.

In order to ensure personal safety, only parts and accessories approved or recommended by the original factory can be used, otherwise serious consequences may occur!

Warning

When using this product, the soldering pencil/soldering tip, with the temperature up to 150-480 °C, may cause burns to the user or cause a fire due to improper application. So Users shall strictly observe the following rules:

- Keep this product away from flammable materials.
- Keep the product out of children's reach.
- Do not use this product if you are inexperienced or have no sufficient necessary knowledge without the guidance of related personnel.
- Do not use this product under wet environment or with wet hands to avoid electric shock.
- Do not modify the product and its accessories without authorization.
- Considering high voltage, this product cannot just be dismantled by professionals.
- Please turn off the power when replacing parts and iron tips, and not resume the use until the equipment is completely cooled down.
- Please use the accessories from the original factory when replacing the product parts.
- Make sure to turn off the power switch when the equipment is temporarily stopped or out of use.

Caution

- To ensure the normal operation of this product's ESD function, only three-core power cord shall be used as the host connecting line.
- Smoke will be generated during the soldering operations. So please pay attention to the smoke evacuation.
- Do not play or do other similar dangerous actions during using this equipment, because it can easily lead to injury to others or yourself.
- Do not use this product for purposes other than soldering.
- Do not modify this product and accessories, otherwise the original warranty will be invalidated or damage may occur to the product.
- When plugging and unplugging the power cord and handle plug, please hold the plug body and do not pull the cord.
- Do not hit the product or its accessories too hard during the operation; otherwise damage may occur to the product.

Disclaimer

We will take no responsibility for any personal injury or property damage caused by reasons other than the

product quality problem, which may include force majeure (natural disasters, etc.) or personal behavior during the operation of this product.

This manual is organized, compiled and released by SHENZHEN ATTEN TECHNOLOGY CO., LTD. according to the latest product features. We will not responsible for further notice of the subsequent improvement of the product and this Manual.

Packing list

GT-Y050 handle



S-01



GT-Y130 handle



S-01



GT-Y150 handle



S-01



GT-N100 tweezers



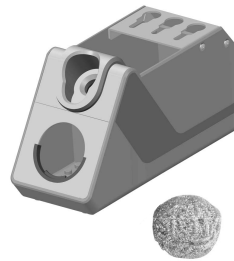
S-02



GT-X150 desoldering gun




S-03

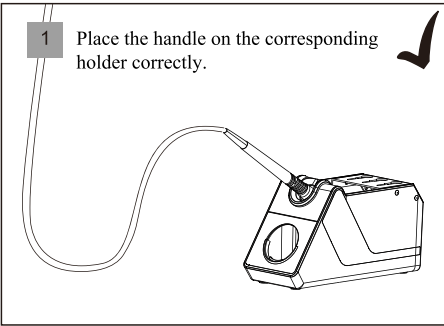


Remarks: model and specification of integrated heating element are shown in page 11

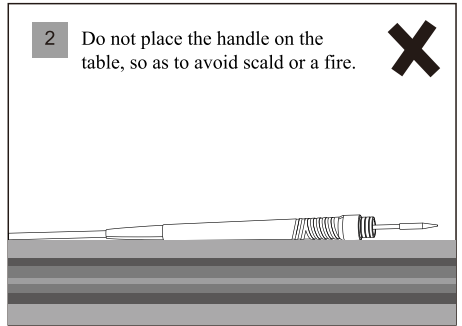
Correct placement mode of the handle

 Warning: for your safety, place the handle on the corresponding holder when the product is left unused.

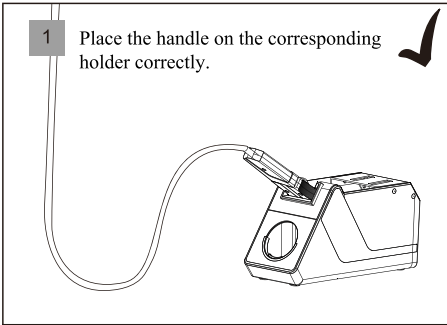
- 1 Place the handle on the corresponding holder correctly. ✓



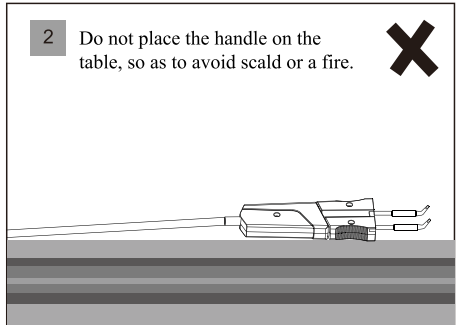
- 2 Do not place the handle on the table, so as to avoid scald or a fire. ✗



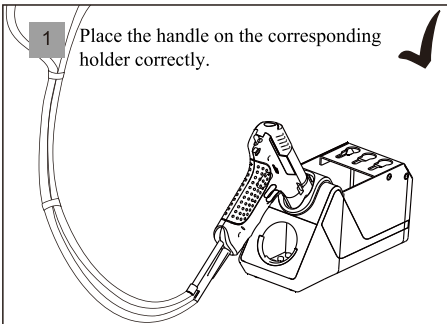
- 1 Place the handle on the corresponding holder correctly. ✓



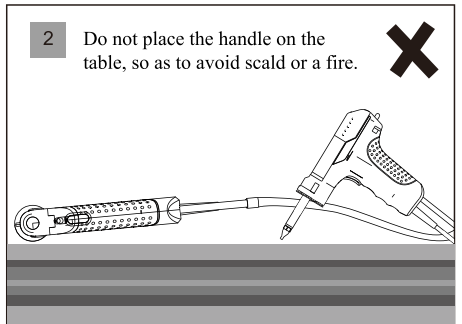
- 2 Do not place the handle on the table, so as to avoid scald or a fire. ✗



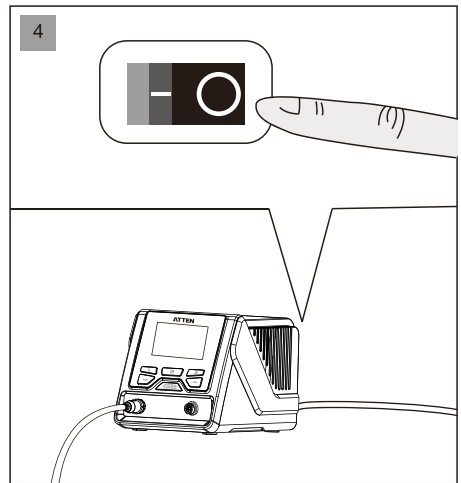
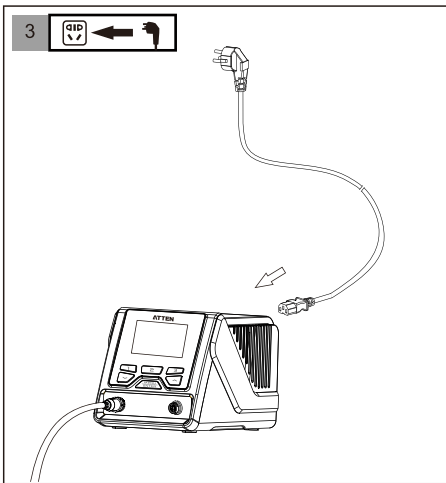
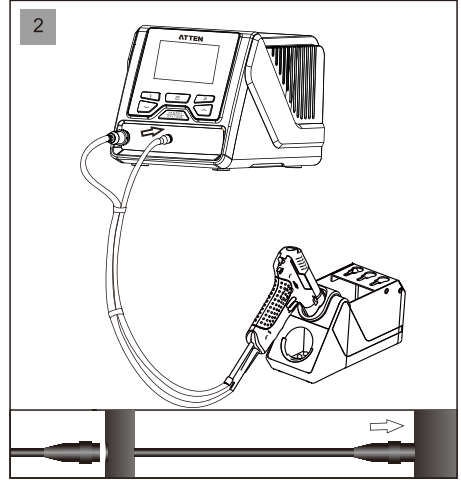
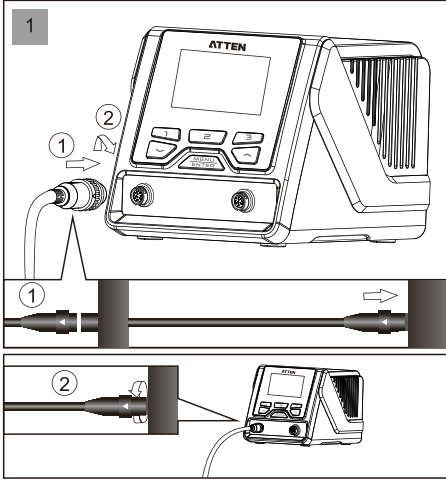
- 1 Place the handle on the corresponding holder correctly. ✓



- 2 Do not place the handle on the table, so as to avoid scald or a fire. ✗



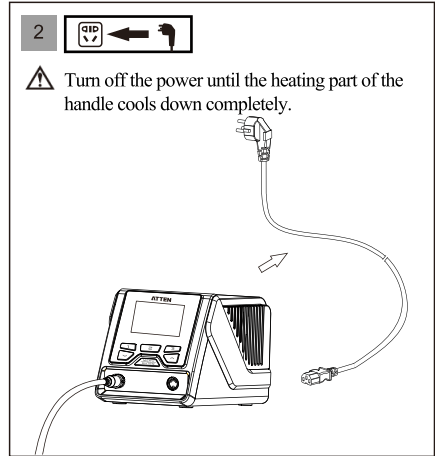
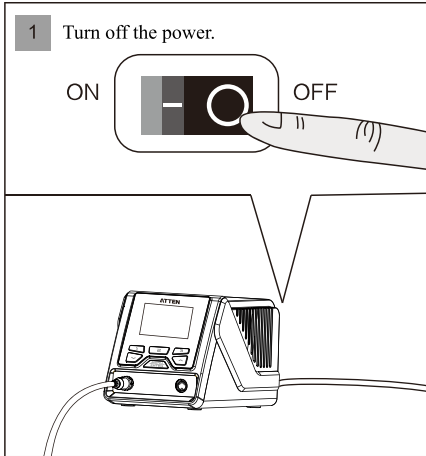
Connection mode



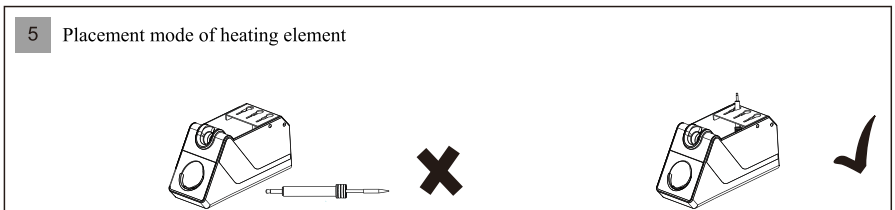
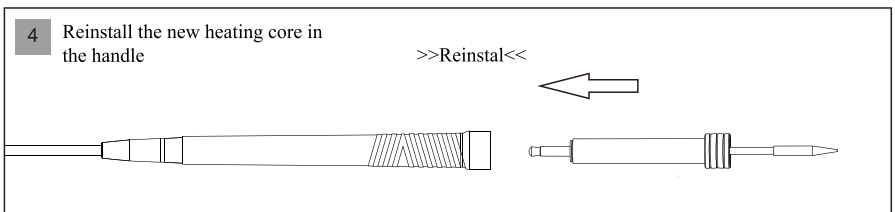
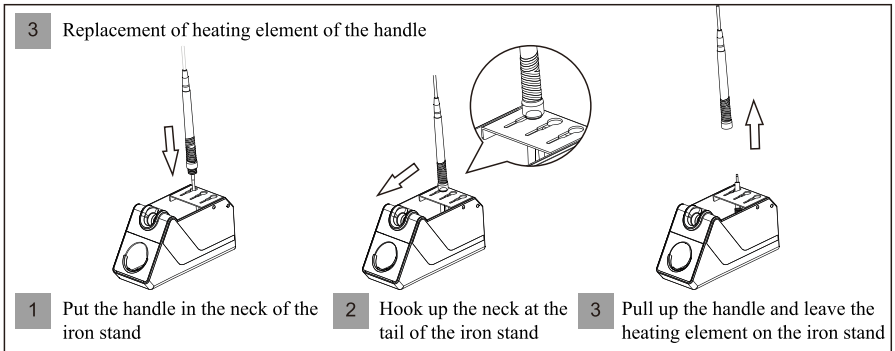
Note

To avoid damaging the host, do not forget to turn off the power when inserting the plug into or removing the plug from the soldering tools!

Replacement of heating element



Replacement of Heating Core of GT-Y050 Handle



Replacement of heating core of GT-Y130 and GT-Y150 handles

3 Replacement of heating core of the handle

1 Put the handle in the neck of the iron stand

2 Move the handle to a position where the solder tip can be stuck

3 Pull up the handle and leave the heating core on the iron stand

4 Reinstall the new heating core in the handle

>>Reinstall<<

Insert the slot of the handle into neck on the heating core.

5 Placement mode of heating core

Replacement of Heating Core of GT-N100 Tweezers

3 Pull out the heating core of the tweezers

4 Reinstall the new heating core in the handle

>>Reinstall<<

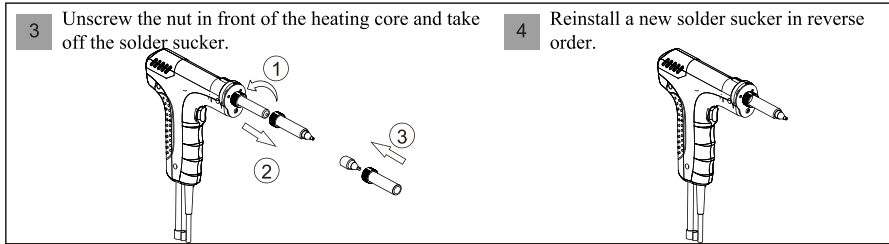
5 Placement mode of heating core

Hint: confirm temperature accuracy after the heating core is replaced and compensate and correct the temperature error using temperature compensation device.

Replacement of solder sucker of GT-X150 desoldering gun

3 Unscrew the nut in front of the heating core and take off the solder sucker.

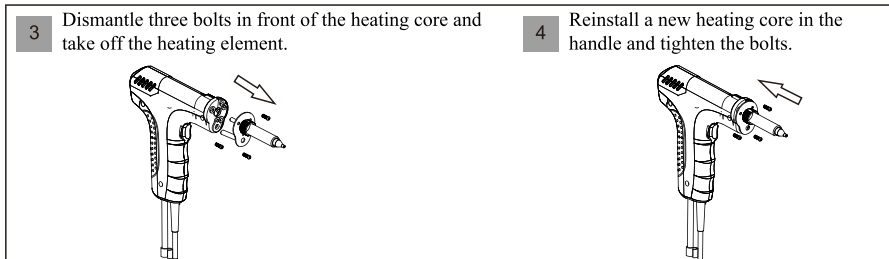
4 Reinstall a new solder sucker in reverse order.



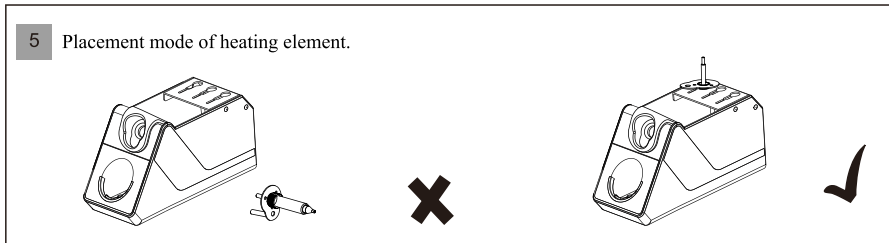
Replacement of heating element of GT-X150 desoldering gun

3 Dismantle three bolts in front of the heating core and take off the heating element.

4 Reinstall a new heating core in the handle and tighten the bolts.



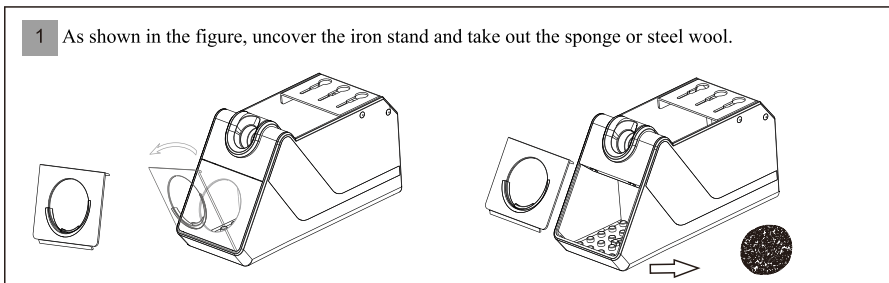
5 Placement mode of heating element.



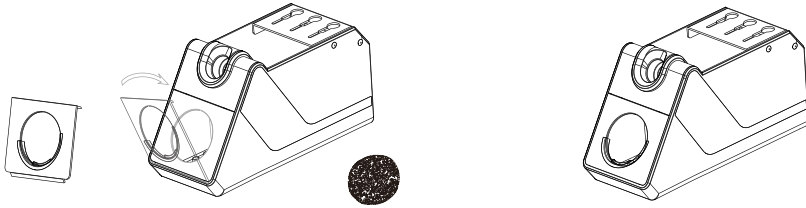
Hint: confirm temperature accuracy after the heating element is replaced and compensate and correct the temperature error using temperature compensation device.

Replacement of cleaning sponge or steel wool

1 As shown in the figure, uncover the iron stand and take out the sponge or steel wool.

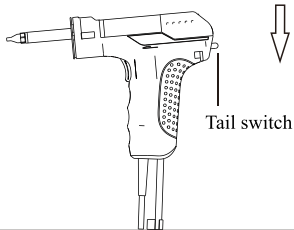


- 2 Install a new sponge or steel wool in the iron stand.

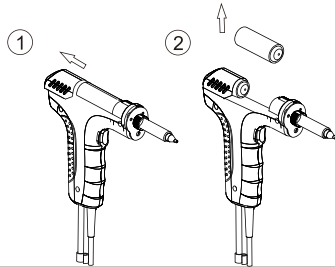


GT-X150 daily cleaning

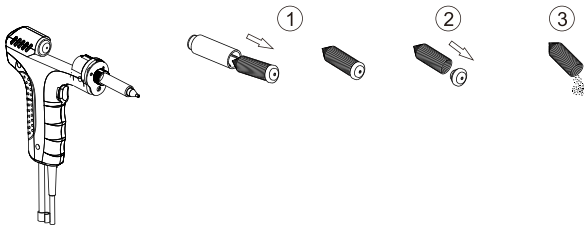
- 1 Press the switch at the tail of the desoldering gun



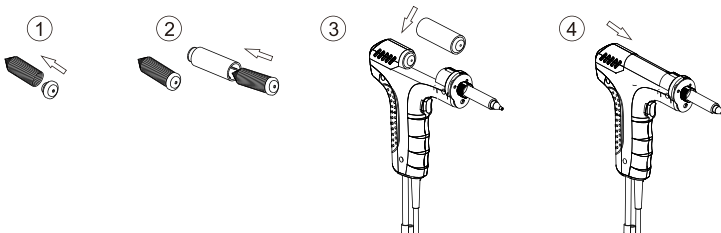
- 2 Push the rear cover backward and take out the solder storage tank.



- 3 Take out the spring in the solder storage tank, pull up the rubber plug and pour out solder splash.



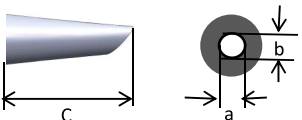

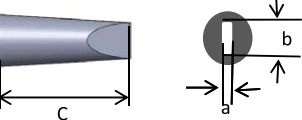



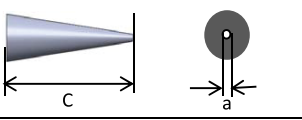

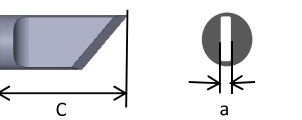

- 4 Install rubber plug on the spring and put it in the solder storage tank. Then reinstall it on the handle of the desoldering gun, push the rear cover forward and lock it.



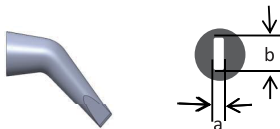
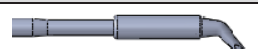
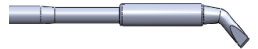



Product specification and model

Product model	GT-Y050	GT-Y130	GT-Y150	GT-N100	GT-X150
Voltage	12VAC	24VAC	24VAC	12VAC	24VAC
Power consumption	50W	130W	150W	50W×2	150W
Temperature range	150°C-480°C/302°F-896°F			250°C-480°C/482°F-896°F	
Cable material	Heat-resisting silica gel				
Type of heating core	Integrated heating element			Split-type heating element	
Temperature sensor	Thermocouple				
Model of heating core	T50 series	T130 series	T150 series	T100 series	HS-5150 series

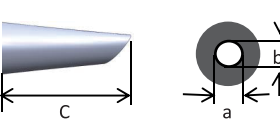




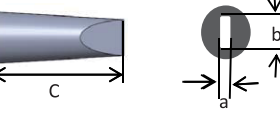
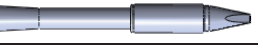



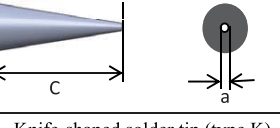


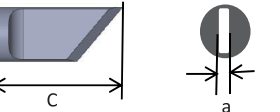

Specification and model of integrated heating element

T50 series					
	Figure	Model	Φ a mm	b mm	c mm
Beveled solder tip (type C) 		T50-1.2C	1.2	1.2	9.0
Chisel solder tip (type D) 		T50-1.3D	0.5	1.3	9.0
		T50-2.2D	0.5	2.2	9.0
		T50-3.0D	1.0	3.0	9.0
Cone solder tip (type I) 		T50-0.5I	0.5		9.0
Knife-shaped solder tip (type K) 		T50-1.2K	1.2		9.0

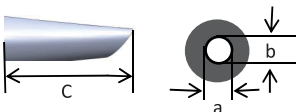



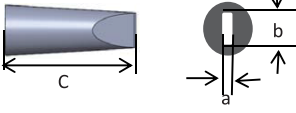


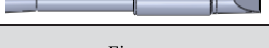
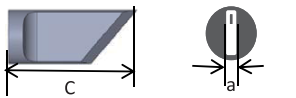

T100 series (heating element of tweezers)

Chisel solder tip (type D)	Figure	Model	Φ a mm	b mm	
		T100-1.3D	0.5	1.3	
		T100-2.2D	0.5	2.2	
		T100-3.0D	1.0	3.0	
Cone solder tip (type I)	Figure	Model	Φ a mm		
		T100-0.5I	0.5		

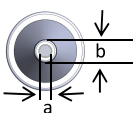
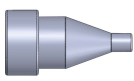
T130 series

Beveled solder tip (type C)	Figure	Model	Φ a mm	b mm	c mm
		T130-1.2C	1.2	1.2	10.0
		T130-2.4C	2.4	2.4	10.0
		T130-3.2C	3.2	3.2	10.0
		T130-4.6C	4.6	4.6	10.0
Chisel solder tip (type D)	Figure	Model	Φ a mm	b mm	c mm
		T130-1.6D	0.8	1.6	10.0
		T130-2.4D	1.0	2.4	10.0
		T130-3.2D	1.2	3.2	10.0
		T130-4.6D	1.6	4.6	10.0
Cone solder tip (type I)	Figure	Model	Φ a mm	b mm	c mm
		T130-0.5I	0.5	10.0	
		T130-1.0I	1.0	10.0	
Knife-shaped solder tip (type K)	Figure	Model	Φ a mm	b mm	c mm
		T130-K	2.0		12.5

T150 series

Beveled solder tip (type C)	Figure	Model	Φ a mm	b mm	c mm
		T150-3C	3.0	3.0	15
		T150-5C	5.0	5.0	16
		T150-6.5C	6.5	6.5	16
Chisel solder tip (type D)	Figure	Model	Φ a mm	b mm	c mm
		T150-3.2D	1.2	3.2	13
		T150-4.6D	1.6	4.6	13
		T150-6.5D	2.0	6.5	13
Knife-shaped solder tip (type K)	Figure	Model	Φ a mm	b mm	c mm
		T150-K	3.0		17

HS-5150 series

	Figure	Model	Φ a mm	b mm
		T151-0.8	0.8	1.8
		T151-1.0	1.0	2.0
		T151-1.3	1.3	2.3
		T151-1.6	1.6	3.0

Daily Use and Maintenance

In order to ensure the service life of the product, pay attention to the following aspects during the using process:

- Try to adopt a welding temperature as low as possible, because a high welding temperature will not only damage the component and PCB, but also oxidize the solder tip and reduce the service life of the solder tip.
- Try to adopt low-activity scaling powder as far as possible. Acid and corrosive scaling power will reduce the service life of the solder tip.
- Eliminate oxide on the solder tip timely to ensure smooth welding process. Attention! Scrap the oxide layer gently when removing oxide on the solder tip. Do not wipe the solder tip violently; otherwise the service life of the solder tip will be affected.
- Wipe the solder tip using soft material as far as possible, such as wet cleaning sponge. If the solder tip is seriously oxidized, wipe it using steel wool. Attention! Do not wipe the solder tip frequently using steel wool; otherwise the service life of the solder tip will be affected.
- Please keep the solder tip coated with tin during heating to avoid oxidizing the solder tip.
- Do not exert excess pressure on the solder tip during welding; otherwise the soldering tin will not be melted quickly, instead the welding object and the heating core will be damaged.
- Prevent GT-X150 handle in use from absorbing other substances than soldering tin, so as to avoid damaging the host.

SHENZHEN ATTEN TECHNOLOGY CO., LTD.

- Soldering iron ● Soldering station ● Hot air rework station
- Multi-function maintenance system
- Regulated DC power supply ● Switching DC power supply
- Programmable power supply

SHENZHEN ATTEN TECHNOLOGY CO., LTD.

Add: Floor 8, Building 2, Senyang High-tech Park, 7 West Road
High-tech Park, Guangming New district, Shenzhen 518132, China

Tel: +86-755-2697 6387

Fax: +86-755-8602 1337

Web: www.atten.com.cn(CN)

www.atten.com(EN)

Email: sales@atten.com.cn

Engineer's partner

All Copyright Reserved
MADE IN CHINA

CBN029678 (A)