

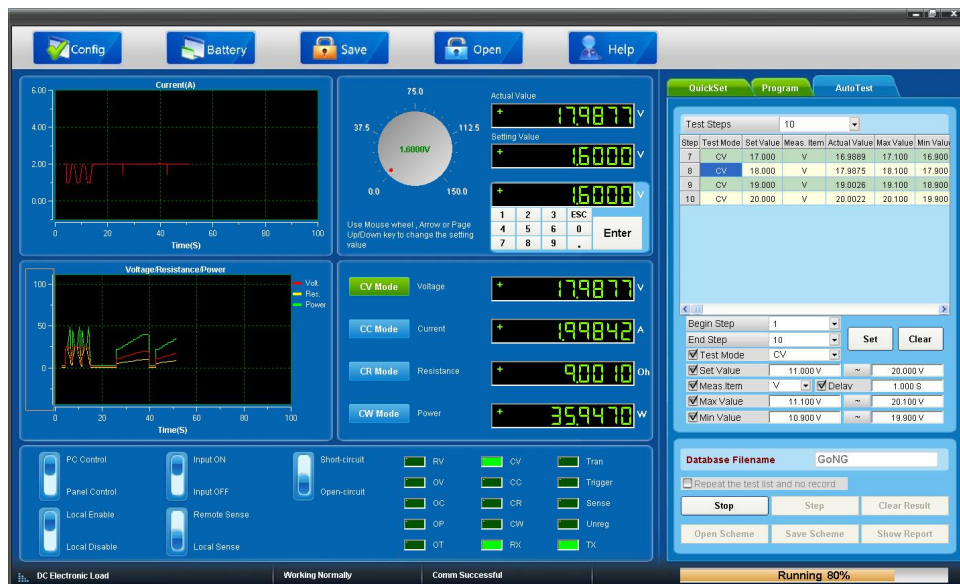


# SEL711/712 Series Programmable DC Electronic Load

150/300W, 0-15/30/60A, 0-150/500V

## Automatic Test

The SEL7 series electronic load is available of automatic test function. 8 sets of data can be edited at most and 50 steps can be edited in each set of data. Each step can be edited in six working modes (load off mode, constant current mode, constant voltage mode, constant resistance mode, short circuit mode) and can be available of four types of parameters from current comparison, voltage comparison, power comparison and resistance comparison. Besides, the delay time of each step ranges from 0.1s to 25.5s, considering the quickness and accuracy. Moreover, SEL7 series electronic load equipped with PC monitoring software allows quick editing test steps, test report output to the EXCEL table by computer operation.



## Battery Test

Constant current mode is applied in SEL7 series electronic load to test the battery capacity. A program is set to control voltage level. When the voltage of the battery is too low, the electronic load will identify the battery being on the threshold value set or at the margin of insecure state and will stop testing automatically. When the load is in testing procedure, you can see the battery voltage, battery discharge current, power and battery capability that has been spared. If the load is connected with PC software, then you can see the discharge curve of battery discharge. This test can set out the reliability and remaining life of battery.

No.367, Fuxing N. Rd.,105 Taipei,Taiwan Tel: +886.909 602 109

sales@salukitec.com [www.salukitec.com](http://www.salukitec.com)



# SEL711/712 Series Programmable DC Electronic Load

150/300W, 0-15/30/60A, 0-150/500V



## Solar Cell Test

SEL7 series programmable electronic load equipped with solar cell test software can test multi-channel solar cell parameters, query the test report according to the date, preview the test report that need to be printed and fast print the test report, etc by computer operation.



No.367, Fuxing N. Rd.,105 Taipei,Taiwan Tel: +886.909 602 109

sales@salukitec.com [www.salukitec.com](http://www.salukitec.com)



# SEL711/712 Series Programmable DC Electronic Load

150/300W, 0-15/30/60A, 0-150/500V

## Technical Specifications

Model		SEL711		SEL712		SEL712B	
Input Rating	Power	150W		300W		300W	
	Current	0-30A		0-30A		0-15A	
	Voltage	0-150V		0-150V		0-500V	
CC Mode	Range	0-3A	0-30A	0-3A	0-30A	0-3A	0-15A
	Resolution	0.1mA	1mA	0.1mA	1mA	0.1mA	1mA
	Accuracy	0.03%+0.05% FS	0.03%+0.05% FS	0.03%+0.05% FS	0.03%+0.05% FS	0.03%+0.05% FS	0.03%+0.05% FS
CV Mode	Range	0.1-19.999V	0.1-150V	0.1-19.999V	0.1-150V	0.1-19.999V	0.1-500V
	Resolution	1mV	10mV	1mV	10mV	1mV	10mV
	Accuracy	0.03%+0.02% FS	0.03%+0.02% FS	0.03%+0.02% FS	0.03%+0.02% FS	0.03%+0.02% FS	0.03%+0.02% FS
CR Mode*	Range	0.03-10KΩ	0.03-5KΩ	0.03-10KΩ	0.03-5KΩ	0.03-10KΩ	0.03-5KΩ
	Resolution	16 bit	16 bit	16 bit	16 bit	16 bit	16 bit
	Accuracy	0.1%+0.1%FS	0.1%+0.1%FS	0.1%+0.1%FS	0.1%+0.1%FS	0.1%+0.1%FS	0.1%+0.1%FS
CW Mode*	Range	0-150W	0-150W	0-300W	0-300W	0-300W	0-300W
	Resolution	1mW	10mW	1mW	10mW	1mW	10mW
	Accuracy	0.1%+0.1%FS	0.1%+0.1%FS	0.1%+0.1%FS	0.1%+0.1%FS	0.1%+0.1%FS	0.1%+0.1%FS
Voltage (V) Measurement	Voltage	0-19.999V	0-150V	0-19.999V	0-150V	0-19.999V	0-500V
	Resolution	1mV	10mV	1mV	10mV	1mV	10mV
	Accuracy	0.015%+0.03% %FS	0.015%+0.03% %FS	0.015%+0.03% %FS	0.015%+0.03% %FS	0.015%+0.03% %FS	0.015%+0.05% %FS
Current (I) Measurement	Current	0-3A	0-30A	0-3A	0-30A	0-3A	0-15A
	Resolution	0.01mA	0.1mA	0.01mA	0.1mA	0.01mA	0.1mA
	Accuracy	0.03%+0.05% FS	0.03%+0.08% FS	0.03%+0.05% FS	0.03%+0.08% FS	0.03%+0.05% FS	0.03%+0.08% FS
Power (W) Measurement*	Watt	100W	150W	100W	300W	100W	300W
	Resolution	1mW	10mW	1mW	10mW	1mW	10mW
	Accuracy	0.1%+0.1%FS	0.1%+0.1%FS	0.1%+0.1%FS	0.1%+0.1%FS	0.1%+0.1%FS	0.1%+0.1%FS
Short Circuit	Current (CC)	≒ 3.3A	≒ 33A	≒ 3.3A	≒ 33A	≒ 3.3A	≒ 16.5A
	Voltage (CV)	0V		0V		0V	
	Resistance (CR)	≒ 55mΩ		≒ 35mΩ		≒ 300mΩ	

No.367, Fuxing N. Rd.,105 Taipei,Taiwan Tel: +886.909 602 109

sales@salukitec.com [www.salukitec.com](http://www.salukitec.com)



# SEL711/712 Series Programmable DC Electronic Load

150/300W, 0-15/30/60A, 0-150/500V

Model		SEL712C		SEL712B30	
Input Rating	Power	300W		300W	
	Current	0-60A		0-30A	
	Voltage	0-150V		0-500V	
CC Mode	Range	0-6A	0-60A	0-3A	0-30A
	Resolution	0.1mA	1mA	0.1mA	1mA
	Accuracy	0.03%+0.05%FS	0.03%+0.05%FS	0.03%+0.05%FS	0.03%+0.05%FS
CV Mode	Range	0.1-19.999V	0.1-150V	0.1-19.999V	0.1-500V
	Resolution	1mV	10mV	1mV	10mV
	Accuracy	0.03%+0.02%FS	0.03%+0.02%FS	0.03%+0.02%FS	0.03%+0.05%FS
CR Mode*	Range	0.03-10KΩ	0.03-5KΩ	0.03-10KΩ	0.03-5KΩ
	Resolution	16 bit	16 bit	16 bit	16 bit
	Accuracy	0.1%+0.1%FS	0.1%+0.1%FS	0.1%+0.1%FS	0.1%+0.1%FS
CW Mode*	Range	0-300W	0-300W	0-300W	0-300W
	Resolution	1mW	10mW	1mW	10mW
	Accuracy	0.1%+0.1%FS	0.1%+0.15%FS	0.1%+0.1%FS	0.1%+0.1%FS
Voltage (V) Measurement	Voltage	0-19.999V	0-150V	0-19.999V	0-500V
	Resolution	1mV	10mV	1mV	10mV
	Accuracy	0.015%+0.03%FS	0.015%+0.03%FS	0.015%+0.03%FS	0.015%+0.05FS
Current (I) Measurement	Current	0-6A	0-60A	0-3A	0-30A
	Resolution	0.1mA	1mA	0.01mA	0.1mA
	Accuracy	0.05%+0.08%FS	0.08%+0.15%FS	0.03%+0.05%FS	0.03%+0.08%FS
Power (W) Measurement*	Watt	100W	300W	100W	300W
	Resolution	1mW	10mW	1mW	10mW
	Accuracy	0.1%+0.1%FS	0.1%+0.15%FS	0.1%+0.1%FS	0.1%+0.1%FS
Short Circuit	Current (CC)	≒ 6.6A	66A	≒ 3.3A	≒ 33A
	Voltage (CV)	0V		0V	
	Resistance (CR)	≒ 25mΩ		≒ 45mΩ	
Battery Measurement	Battery Input: 0.1-150V, Max. Measurement: Capacity=999AH, Resolution=0.1mA, Time Range=1S-16H				
Dynamic Measurement	Transition List: 0-25kHz; 2.5A/us; T1&T2:60us-999s; Accuracy: ±15% offset+10% FS				
CC Soft-startup Time	1 ms; 2 ms; 5ms; 10ms; 20 ms; 50 ms; 100 ms; 200 ms; 500 ms; 1000 ms Accuracy: ±15% offset+10% FS				

No.367, Fuxing N. Rd.,105 Taipei,Taiwan Tel: +886.909 602 109

sales@salukitec.com [www.salukitec.com](http://www.salukitec.com)



# SEL711/712 Series Programmable DC Electronic Load

150/300W, 0-15/30/60A, 0-150/500V




<b>Temperature Range</b>	Operating: 0 to 40°C, Storage: -10°C to 70°C
<b>Dimension</b>	214(W)×108(H)×365(D) mm
<b>Weight</b>	2.8kg

Note: \* voltage and current input value  $\geq 10\%$  full measurement

## Ordering Information

Model	SEL711	SEL712	SEL712B	SEL712C	SEL712B30
Power	150W	300W	300W	300W	300W
Current	0-30A	0-30A	0-15A	0-60A	0-30A
Voltage	0-150V	0-150V	0-500V	0-150V	0-500V

## Options

Option No.	Item	Description
M131	RS232 interface communication cable	
M132	RS485 interface communication cable	
M133	USB interface communication cable	

Attention: Due to the need for improvement, the above contents are subject to change without notice.

No.367, Fuxing N. Rd.,105 Taipei,Taiwan Tel: +886.909 602 109

sales@salukitec.com [www.salukitec.com](http://www.salukitec.com)

