

SEL838/838B Programmable DC Electronic Load

50kW, 0-240/500A, 0-150/500V

Key Features

- Six high speed operation modes: CC,CR,CV,CW,CC+CV,CR+CV
- Over current, over voltage, over power, over heating and polarity reversal protection
- High-luminance vacuum fluorescent display (VFD) screen with two line, four channel display
- Intelligent fan system will automatically activate based on changing ambient temperatures
- Soft-start time setting, activating the power supply in accordance with the set voltage value
- Battery test and short-circuit test functions
- Available of dynamic testing and rising edge and falling edge setting
- Supporting external trigger on either input or output
- External current waveform monitor terminal output terminal
- Supports remote voltage compensation and multi-data storage
- Power-on-self-test, software calibration and standard rack mountable
- Available with RS232/RS485/USB serial interfaces

Typical Applications

- Research institute
- Production lines
- Solar cell and fuel cell
- Automotive electronic, aeronautic and astronautic, maritime



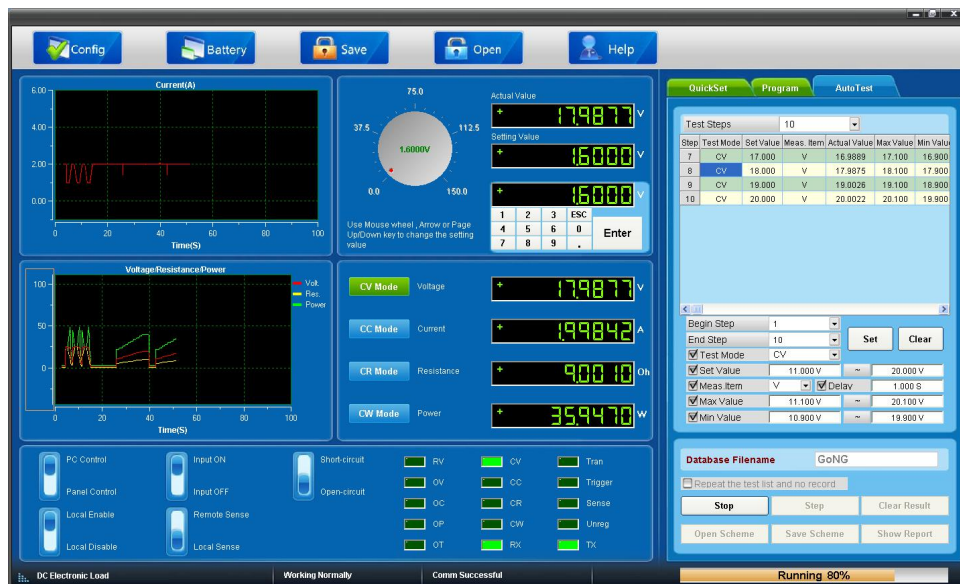
The new SEL8XX series programmable DC electronic load is a new generation product designed by Saluki Technology. Incorporating high-performance chips, the SEL8XX series delivers high speed and high accuracy with a resolution of 1 mV and 1 mA (basic accuracy is 0.03% and basic current rise speed is 2.5 A/ μ s). SEL8XX series have wide application from production lines for cell phone chargers, cell phone batteries, electronic vehicle batteries, switching power supplies, linear power supplies, and LED drivers, to research institute, automotive electronic, aeronautic and astronautic, maritime, solar cell and fuel cell etc. test and measurement applications.

SEL838/838B Programmable DC Electronic Load

50kW, 0-240/500A, 0-150/500V

Automatic Test

The SEL8 series electronic load is available of automatic test function. 8 sets of data can be edited at most and 50 steps can be edited in each set of data. Each step can be edited in six working modes (load off mode, constant current mode, constant voltage mode, constant resistance mode, short circuit mode) and can be available of four types of parameters from current comparison, voltage comparison, power comparison and resistance comparison. Besides, the delay time of each step ranges from 0.1s to 25.5s, considering the quickness and accuracy. Moreover, SEL8 series electronic load equipped with PC monitoring software allows quick editing test steps, test report output to the EXCEL table by computer operation.



Battery Test

Constant current mode is applied in SEL8 series electronic load to test the battery capacity. A program is set to control voltage level. When the voltage of the battery is too low, the electronic load will identify the battery being on the threshold value set or at the margin of insecure state and will stop testing automatically. When the load is in testing procedure, you can see the battery voltage, battery discharge current, power and battery capability that has been spared. If the load is connected with PC software, then you can see the discharge curve of battery discharge. This test can set out the reliability and remaining life of battery.

No.367, Fuxing N. Rd.,105 Taipei,Taiwan Tel: +886.909 602 109

sales@salukitec.com www.salukitec.com



SEL838/838B Programmable DC Electronic Load

50kW, 0-240/500A, 0-150/500V



Solar Cell Test

SEL8 series programmable electronic load equipped with solar cell test software can test multi-channel solar cell parameters, query the test report according to the date, preview the test report that need to be printed and fast print the test report, etc by computer operation.



No.367, Fuxing N. Rd.,105 Taipei,Taiwan Tel: +886.909 602 109

sales@salukitec.com www.salukitec.com



SEL838/838B Programmable DC Electronic Load

50kW, 0-240/500A, 0-150/500V

Technical Specifications

Model		SEL838		SEL838B	
Input Rating	Power	50KW		50KW	
	Current	0-500A		0-240A	
	Voltage	0-150V		0-500V	
CC Mode	Range	0-50A	0-500A	0-24A	0-240A
	Resolution	1mA	10mA	1mA	10mA
	Accuracy	0.1%+0.05%FS	0.15%+0.2%FS	0.1%+0.05%FS	0.15%+0.1%FS
CV Mode	Range	0.1-19.999V	0.1-150V	0.1-19.999V	0.1-500V
	Resolution	1mV	10mV	1mV	10mV
	Accuracy	0.03%+0.02%FS	0.03%+0.02%FS	0.03%+0.02%FS	0.03%+0.05%FS
CR Mode*	Range	0.03-10KΩ	0.03-5KΩ	0.03-10KΩ	0.03-5KΩ
	Resolution	16 bit	16 bit	16 bit	16 bit
	Accuracy	0.1%+0.1%FS	0.2%+0.15%FS	0.1%+0.1%FS	0.2%+0.15%FS
CW Mode*	Range	0-7500W	0-50000W	0-12000W	0-50000W
	Resolution	10mW	100mW	10mW	100mW
	Accuracy	0.1%+0.1%FS	0.2%+0.15%FS	0.1%+0.1%FS	0.2%+0.15%FS
Voltage (V) Measurement	Voltage	0-19.999V	0-150V	0-19.999V	0-500V
	Resolution	1mV	10mV	1mV	10mV
	Accuracy	0.015%+0.03%FS	0.015%+0.03%FS	0.015%+0.03%FS	0.015%+0.05%FS
Current (I) Measurement	Current	0-50A	0-500A	0-24A	0-240A
	Resolution	1mA	10mA	0.1mA	1mA
	Accuracy	0.1%+0.05%FS	0.15%+0.2%FS	0.1%+0.05%FS	0.15%+0.1%FS
Power (W) Measurement*	Watt	100W	50000W	100W	50000W
	Resolution	1mW	100mW	1mW	100mW
	Accuracy	0.1%+0.1%FS	0.2%+0.15%FS	0.1%+0.1%FS	0.2%+0.15%FS
Short Circuit	Current (CC)	≒ 55A	≒ 550A	≒ 26.4A	≒ 264A
	Voltage (CV)	0V		0V	
	Resistance (CR)	≒ 3mΩ		≒ 4mΩ	

No.367, Fuxing N. Rd.,105 Taipei,Taiwan Tel: +886.909 602 109

sales@salukitec.com www.salukitec.com



SEL838/838B Programmable DC Electronic Load

50kW, 0-240/500A, 0-150/500V



Model	SEL838	SEL838B
Battery Measurement	Battery Input:0.1-150V; Max. Measurement: Capacity=999AH; Resolution=0.1mA; Time Range=1S-16H	
Dynamic Measurement	Transition List: 0-25kHz; 5A/us; T1&T2:60us-999s; Accuracy: ±15% offset+10% FS	
CC Soft-startup Time	1mS;2mS;5mS;10mS;20mS;50mS;100mS;200mS;500ms;1000ms Accuracy:+15% offset+10%FS	
Temperature Range	Operating: 0 to 40°C, Storage: -10°C to 70°C	
Dimension	2000(W)×700(H)×700(D) mm *3	
Weight	1050kg	

Note: * voltage and current input value $\geq 10\%$ full measurement

Ordering Information

Model	SEL838	SEL838B
Power	50KW	50KW
Current	0-500A	0-240A
Voltage	0-150V	0-500V

Options

Option No.	Item	Description
M131	RS232 interface communication cable	
M132	RS485 interface communication cable	


No.367, Fuxing N. Rd.,105 Taipei,Taiwan Tel: +886.909 602 109

sales@salukitec.com www.salukitec.com



SEL838/838B Programmable DC Electronic Load

50kW, 0-240/500A, 0-150/500V

M133	USB interface communication cable	
------	-----------------------------------	--

Attention: Due to the need for improvement, the above contents are subject to change without notice.