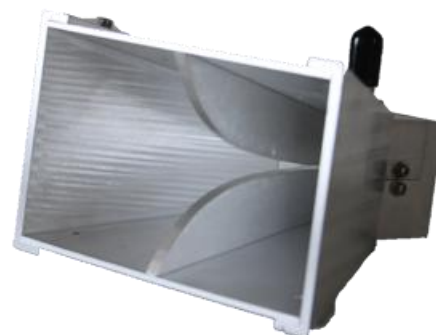


# DA89902 Horn Antenna

(18GHz - 40GHz)

## Key Features

- Frequency Range: 18GHz to 40GHz
- High gain, Low VSWR
- High directivity, Stable performance
- Optional antenna handle, convenient for field using



## Overview

Saluki DA89902 horn antenna has the characteristics of high directivity, low cutoff frequency of the main mode, and wide frequency band of operation.

Model	DA89902
Frequency range	18GHz - 40GHz
Nominal impedance	50Ω
VSWR	18GHz - 26.5GHz: $\leq 2.5\text{dB}$ 26.5GHz - 40GHz: $\leq 2.5\text{dB}$
Gain	18GHz - 26.5GHz: $\geq 3\text{dB}$ 26.5GHz - 40GHz: $\geq 5\text{dB}$
Connector	2.92mm (f)
Dimension	130×100×80 mm
Weight	1kg

*Note: Information will conduct the necessary updates, the contents of this document are subject to change without notice.*