

PDA60250 Hyper Log Passive Directional Antenna

(680MHz - 25GHz)

Key Features

- Frequency range: 680MHz to 25GHz
- Typical 5dBi gain
- Suitable for field-strength and EMC measurements
- Used for open-field or lab application
- Made in Germany



Applications

- Spectrum analyzer
- Signal Generator
- WiMAX
- Directional radio



Overview

Saluki PDA60250 Hyper LogPer series passive directional antenna has the wide frequency range up to 25GHz. Its small physical antenna-size and low weight make this antenna predestined for mobile use. The frequency range now also allows the detection of unusable signal sources like military radar, various satellite services, very high frequency bugs, etc.

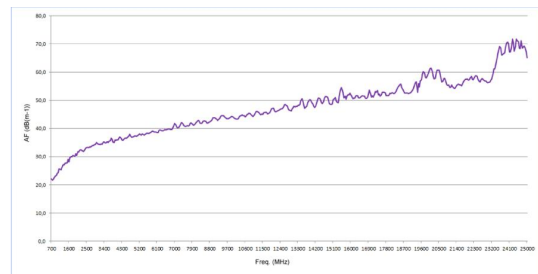
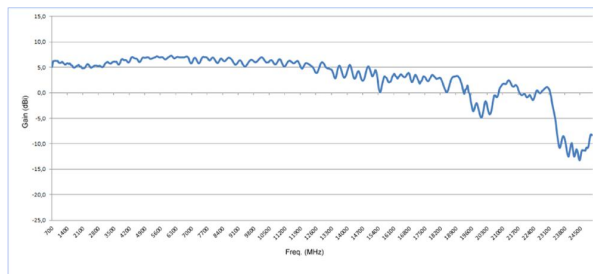
| | |
|-------------------------|----------------------|
| Model | PDA60250 |
| Frequency range | 680MHz - 25GHz |
| Nominal impedance | 50Ω |
| VSWR | < 1:2.5 |
| Gain | 5dBi (typ.) |
| Design | Logarithmic-periodic |
| Max. transmission power | 50W CW (800MHz) |
| Calibration points | 487 (50MHz steps) |

PDA60250 Hyper Log Passive Directional Antenna

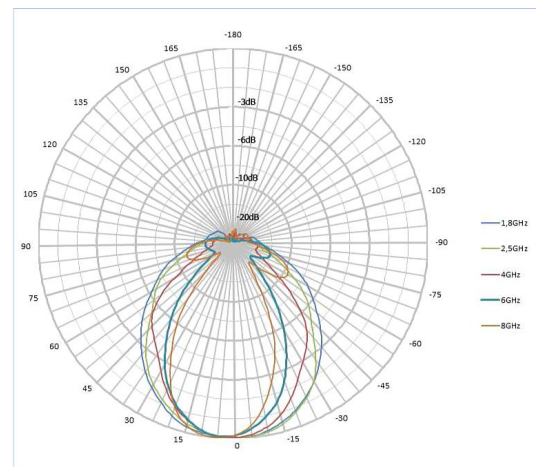
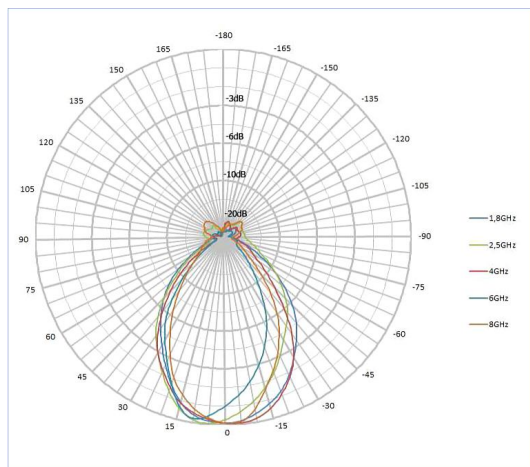
(680MHz - 25GHz)

| | |
|---------------|-------------------------------------|
| Connector | SMA (f), or N with adapter (option) |
| Dimension | 340×200×25 mm |
| Weight | 0.25kg |
| Tripod socket | 1/4" |

Gain Diagram and Antenna Factor



Horizontal and Vertical Pattern of PDA60X Antenna



Note: Information will conduct the necessary updates, the contents of this document are subject to change without notice.