

# PDA60350 Hyper Log Passive Directional Antenna

(680MHz - 35GHz)

## Key Features

- Frequency range: 680MHz to 35GHz
- Typical 5dBi gain
- Suitable for field-strength and EMC measurements
- Used for open-field or lab application
- Made in Germany



## Applications

- Spectrum analyzer
- Signal Generator
- WiMAX
- Directional radio



## Overview

Saluki PDA60350 Hyper LogPer series passive directional antenna has the wide frequency range up to 35GHz. Its small physical antenna-size and low weight make this antenna predestined for mobile use. The frequency range now also allows the detection of unusable signal sources like military radar, various satellite services, very high frequency bugs, etc.

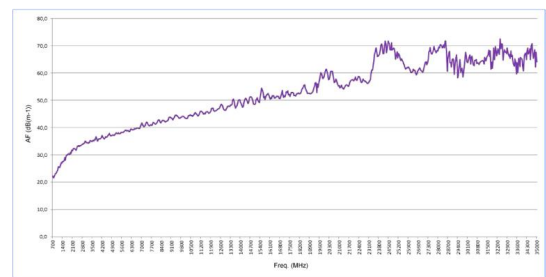
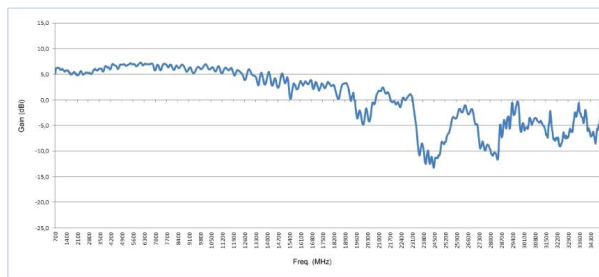
Model	PDA60250
Frequency range	680MHz - 25GHz
Nominal impedance	50Ω
VSWR	< 1:2.5
Gain	5dBi (typ.)
Design	Logarithmic-periodic
Max. transmission power	50W CW (800MHz)
Calibration points	687 (50MHz steps)

# PDA60350 Hyper Log Passive Directional Antenna

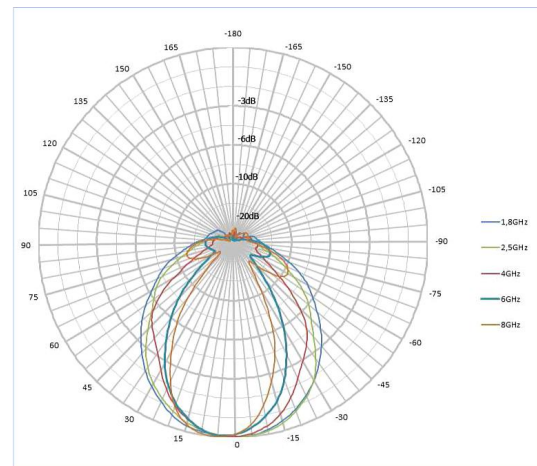
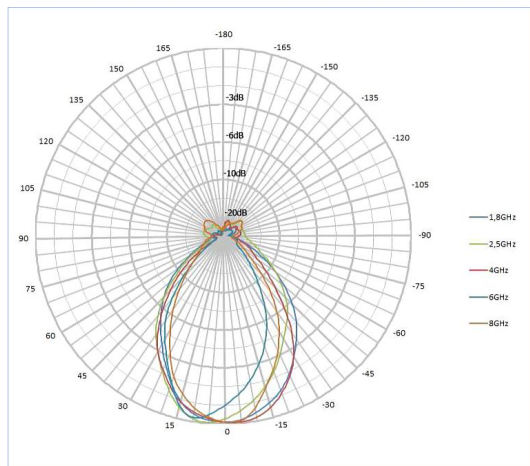
(680MHz - 35GHz)

Connector	SMA (f), or N with adapter (option)
Dimension	340×200×25 mm
Weight	0.25kg
Tripod socket	1/4"

## Gain Diagram and Antenna Factor



## Horizontal and Vertical Pattern of PDA60X Antenna



**Note:** Information will conduct the necessary updates, the contents of this document are subject to change without notice.

No.367, Fuxing N. Rd.,105 Taipei,Taiwan Tel: +886. 909 602 109

sales@salukitec.com [www.salukitec.com](http://www.salukitec.com)

