

# PDA7060 Hyper Log Passive Directional Antenna

(700MHz - 6GHz)

## Key Features

- Frequency range: 700MHz to 6GHz
- Typical 5dBi gain
- Suitable for field-strength and EMC measurements
- Used for open-field or lab application
- Made in Germany



## Applications

- Spectrum analyzer
- Signal Generator
- WiMAX
- Directional radio



## Overview

Saluki PDA7060 Hyper LogPer series passive directional antenna has higher frequency range up to 6GHz including WiMAX etc. Its small physical antenna-size and low weight make this antenna predestined for mobile use. It is optimal for usage with spectrum analyzers for EMC measurement, which is suitable for laboratory or outdoor radio reception or transmission.

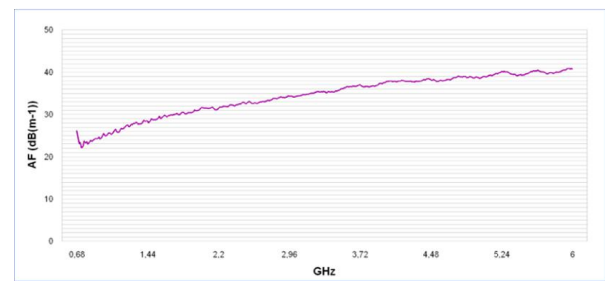
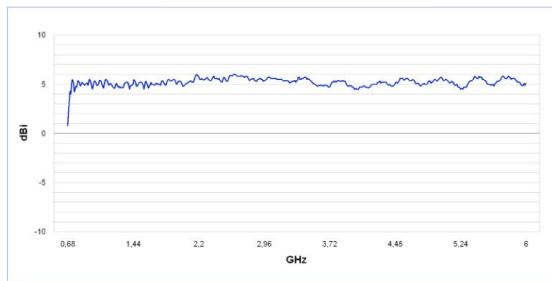
Model	PDA7060
Frequency range	700MHz - 6GHz
Nominal impedance	50Ω
VSWR	< 1:2
Gain	5dBi (typ.)
Design	Logarithmic-periodic
Max. transmission power	100W CW (400MHz)
Antenna factor	26-41dB/m

# PDA7060 Hyper Log Passive Directional Antenna

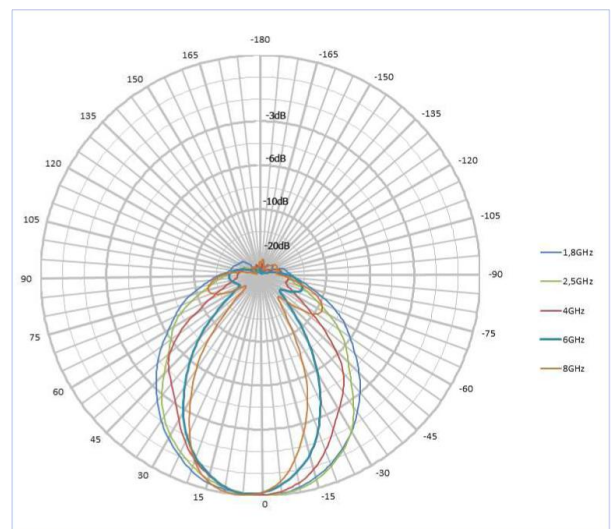
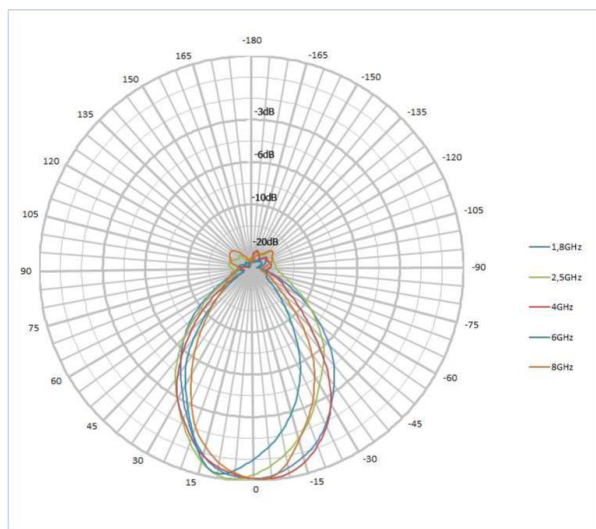
(700MHz - 6GHz)

Calibration points	533 (10MHz steps)
Connector	SMA (f), or N with adapter (option)
Dimension	340×200×25 mm
Weight	0.25kg
Tripod socket	1/4"

## Gain Diagram and Antenna Factor



## Horizontal and Vertical Pattern of PDA70X Antenna



**Note:** Information will conduct the necessary updates, the contents of this document are subject to change without notice.

No.367, Fuxing N. Rd.,105 Taipei,Taiwan Tel: +886. 909 602 109

sales@salukitec.com [www.salukitec.com](http://www.salukitec.com)

