

TP1000 Paperless recorder



Expansion 200 channel

Memory 3G

TC

TR

4-20mA/0-20mA

0-5V/0-10V

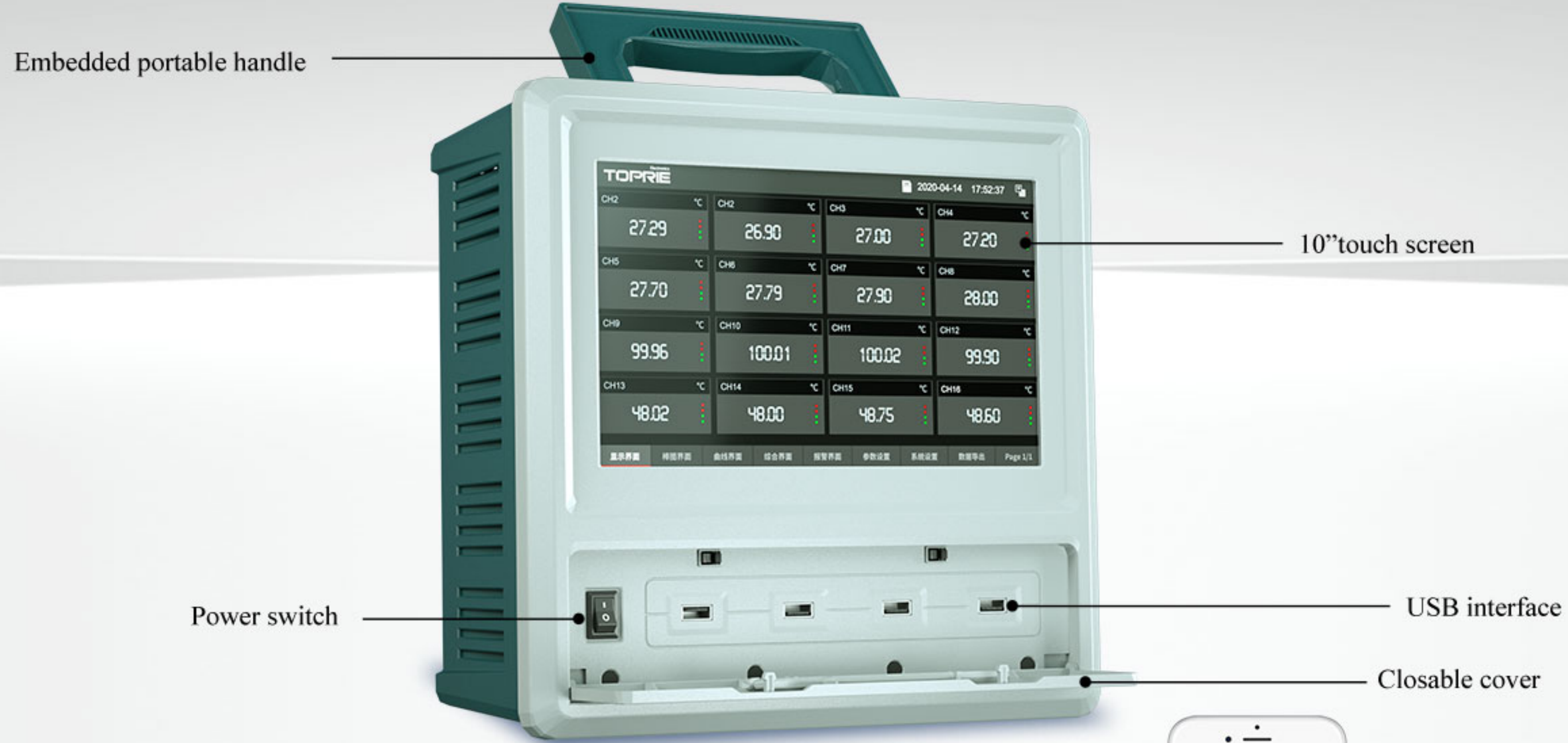
485/232/EstherNet

Acquisition time 0.1S/1S

Each module specification model function description

Module name	Model	Function description	Parameter
Universal signal input module	TP1708P	Temperature:K,T,J,E,S,B,R,N,WRe3,WRe5 thermocouple, PT100,PT1000 PT resistor DC Voltage 0~5V,0~10V ±100mV,DC current 4~20mA	8 channel signal input
Quick acquisition module 0.1S	TP1708Q	Temperature: K,T,J,E,S,B,R,N,WRe3,WRe5 thermocouple, DC Voltage 0~5V,0~10V,±100mV, DC current 4~20mA (only for 8 channel same type use)	8 channel signal input
Relay alarm output module	TP1708J	Adopt 8 normally open relay contact output Each contact can be matched with any channel Maximum current 5A	8 channel signal input
Temperature humidity acquisition module	TP1728	4 TP2305 temperature and humidity probes can be connected or connected 8 TP2305 single humidity probes, accuracy ±3%; Can be connected to 8 DS18B20 temperature sensors (-20°C ~ 125°C, accuracy ±0.3°C) When ordering	8 channel signal input
Switch input module	TP1708K	8 channel switch signal input module	8 channel signal input
DC current acquisition module	TP1748	Maximum support for DC DC current 0~10A acquisition (The current range can be customized) Accuracy 0.5%, resolution 1mA	8 channel signal input
DC Voltage acquisition module	TP1758	Maximum support for DC DC voltage 0~120V acquisition Accuracy 0.5%, resolution 1mV	8 channel signal input
AC power electrical parameter testing module	TP1706AC	Single-phase AC power electric energy parameter test record Can be shared with other modules such as temperature in a recorder host	Current,voltage, power, frequency,power energy
AC/DC power electrical parameter testing module	TP1706ADC	Voltage range:5~600V Current:10mA~20A,Frequency:45~400Hz	AD/AC Current,voltage, power, frequency,power energy
Wireless terminal DTU module	TP1702V4	Recorder host wireless module supports 4G Wireless data upload platform	(Custom)
Recorder dedicated battery module	TP1701	1 battery module can work continuously for 10 hours of 8-channel recorder Adopt 12V, 4000mAH high-capacity polymer lithium battery pack Multiple battery modules can be inserted to achieve longer delay test use	DC12.6Vouput
NTC temperature sensor acquisition module	TP1708NTC	Can be connected to 8 or 16 NTC temperature sensors 3600,3950, 3425, 3455, 3435 and many other specifications, customizable	8 channel or 16 channel (custom)

10.2" color LCD touch screen



expansion to 200 channel

Embedded install

Isolated universal input

acquisition speed 0.1S /1S

MODBUS communication protocol

large storage 3G

Standard EtherNet, WIFI or 4G module for optional

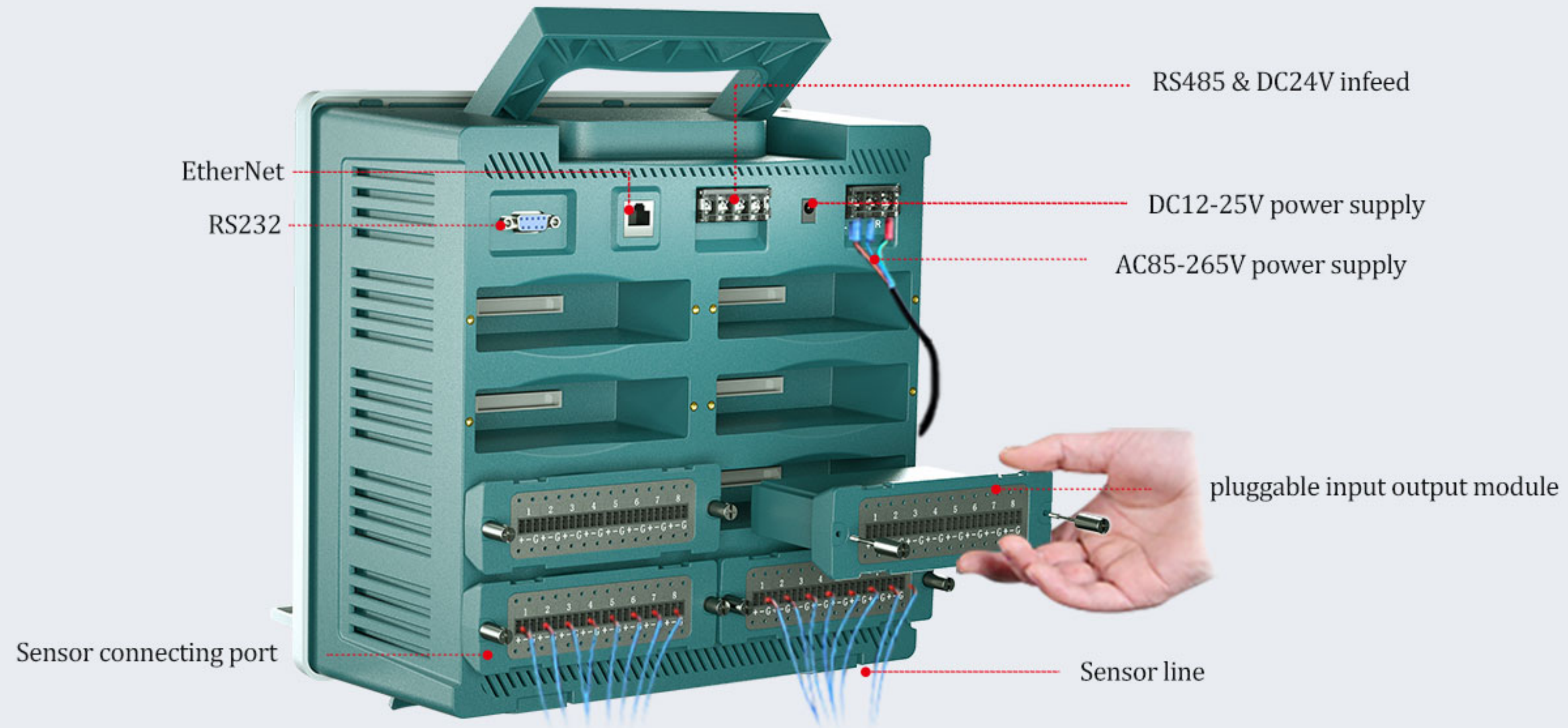


click access to web.toprie.com

Free IoT platform to realize IE/WeChat remote monitoring

Support up to 200 channels

Each 8 channel is a module, it can be inserted into 8 modules, which can measure various signal sensors such as temperature, humidity, pressure, liquid level, voltage, current, etc.



Multi-function hot swap input output module

To expand the channel and upgrade function



Each module specification model function description

Module name	Model No.	Function description	Parameter
Universal signal input module	TP1708P	Temperature:K,T,J,E,S,B,R,N,WRe3,WRe5 thermocouple, PT100,PT1000 PT resistor DC Voltage 0~5V,0~10V ±100mV,DC current 4~20mA	8 channel signal input
Quick acquisition module 0.1S	TP1708Q	Temperature: K,T,J,E,S,B,R,N,WRe3,WRe5 thermocouple, DC Voltage 0~5V,0~10V,±100mV, DC current 4~20mA (only for 8 channel same type use)	8 channel signal input
Relay alarm output module	TP1708J	Adopt 8 normally open relay contact output Each contact can be matched with any channel Maximum current 5A	8 channel signal input
Temperature humidity acquisition module	TP1728	4 TP2305 temperature and humidity probes can be connected or connected 8 TP2305 single humidity probes, accuracy ±3%; Can be connected to 8 DS18B20 temperature sensors (-20°C ~ 125°C, accuracy ±0.3°C) When ordering	8 channel signal input
Switch input module	TP1708K	8 channel switch signal input module	8 channel signal input
DC current acquisition module	TP1748	Maximum support for DC DC current 0~10A acquisition (The current range can be customized) Accuracy 0.5%, resolution 1mA	8 channel signal input
DC Voltage acquisition module	TP1758	Maximum support for DC DC voltage 0~120V acquisition Accuracy 0.5%, resolution 1mV	8 channel signal input
AC power electrical parameter testing module	TP1706AC	Single-phase AC power electric energy parameter test record Can be shared with other modules such as temperature in a recorder host	Current,voltage, power, frequency,power energy
AC/DC power electrical parameter testing module	TP1706ADC	Voltage range:5~600V Current:10mA~20A,Frequency:45~400Hz	AD/AC Current,voltage, power, frequency,power energy
Wireless terminal DTU module	TP1702V4	Recorder host wireless module supports 4G Wireless data upload platform	(Custom)
Recorder dedicated battery module	TP1701	1 battery module can work continuously for 10 hours of 8-channel recorder Adopt 12V, 4000mAH high-capacity polymer lithium battery pack Multiple battery modules can be inserted to achieve longer delay test use	DC12.6Vouput
NTC temperature sensor acquisition module	TP1708NTC	Can be connected to 8 or 16 NTC temperature sensors 3600,3950, 3425, 3455, 3435 and many other specifications, customizable	8 channel or 16 channel (custom)

Acquisition module technical specification

Input Type	Range	Accuracy	Resolution
0-10V	-0.5V~+11.000V	0.001% F.S. ±0.0001V	0.01V
0-5V	-0.5V~+5.500V	0.001% F.S. ±0.0001V	0.01V
±20mV	-21mV~+21mV	0.0025% F.S. ±0.001mV	0.01mV
±100mV	-110.0mV~+110.0mV	0.0005% F.S. ±0.001mV	0.01mV
4-20mA	+3mA~+21.00mA	0.005% F.S. ±0.001mA	0.01mA
K	-60°C~+1372°C	±(0.05% rdg. +0.5°C)	0.01°C
J	-100°C~+1200°C	±(0.05% rdg. +0.5°C)≤0°C ±(0.15%rdg.+0.5°C)	0.01°C
E	-100°C~+1000°C	±(0.05% rdg. +0.5°C)≤0°C ±(0.15%rdg.+0.5°C)	0.01°C
T	-100°C~+400°C	±(0.05% rdg. +0.5°C)≤0°C ±(0.15%rdg.+0.5°C)	0.01°C
N	-100°C~+1300°C	±(0.05% rdg. +0.7°C)≤0°C ±(0.3%rdg.+0.7°C)	0.01°C
	0°C~+1500°C	±0.05%of rdg±0.8°C	0.01°C
w	+1500°C~+2315°C	±0.05%of rdg±1.1°C	0.01°C
	400°C~+800°C	±0.2% rdg. +2.0°C	0.01°C
R	+800°C~+1768°C	±0.05%of rdg±1.0°C	0.01°C
	800°C~+1768°C	±(0.05% rdg. +1.0°C)	0.01°C
S	+400°C~+800°C	±(0.2% rdg. +2.0°C)	0.01°C
	+800°C~+1820°C	±(0.05% rdg. +1.0°C)	0.01°C
B	+400°C~+800°C	±(0.2% rdg. +2.5°C)	0.01°C
pt100	-200°C~+660°C	±(0.05% rdg. +0.3°C)	0.01°C
cu50	-50°C~+150°C	±(0.05% rdg. +0.3°C)	0.01°C
pt1000	-200°C~+300°C	±(0.05% rdg. +0.2°C)	0.01°C

*Warm-up time is over 30 minutes, Thermocouple measurement: Including cold junction compensation accuracy.

*Standard working status(above accuracy):Temperature 25±3°C, Humidity:55±10%RH

*Environmental adaptation capability: Working temperature:-20°C to~50°C Working humidity:

*0~95%RH(No Condensation)

Multiple display interface

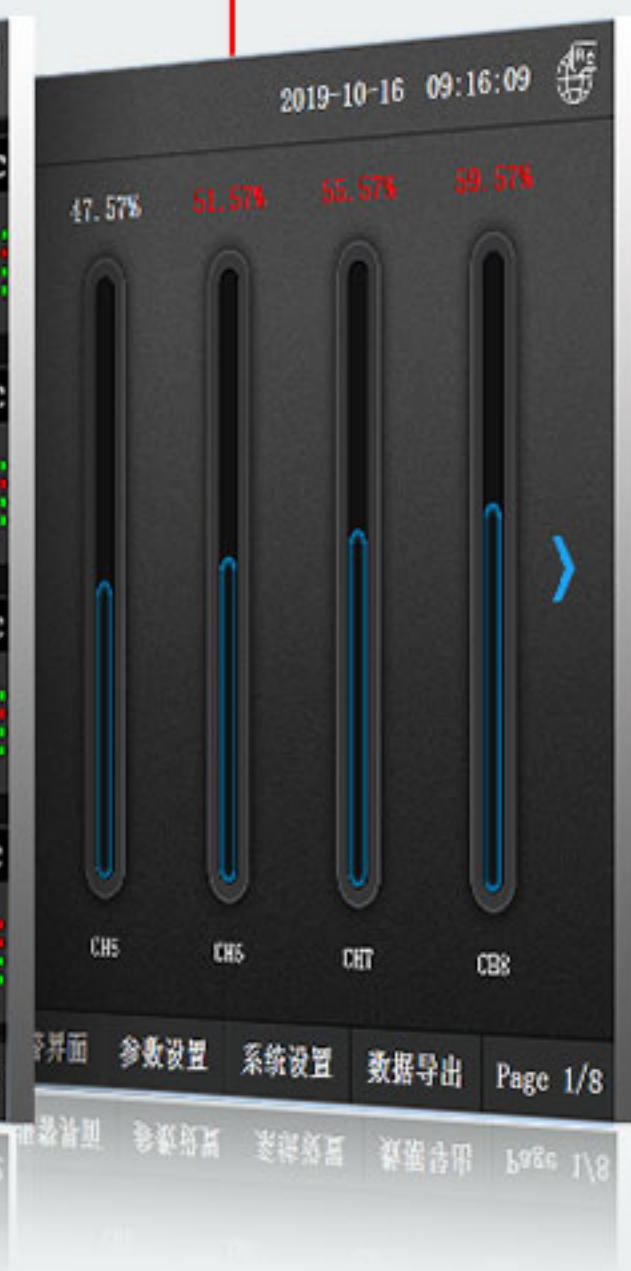
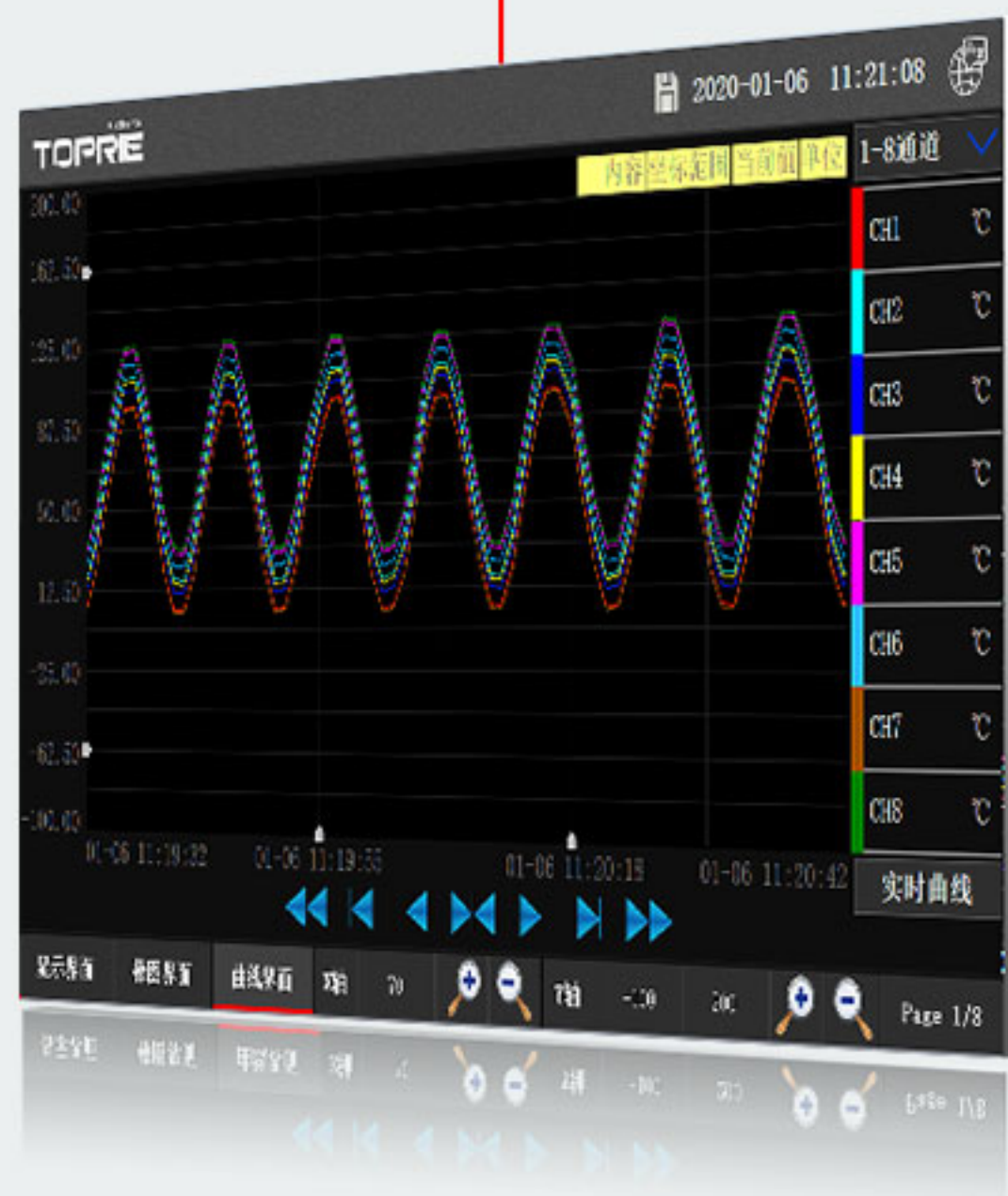
—Meet all your demands—

curve

comprehensive

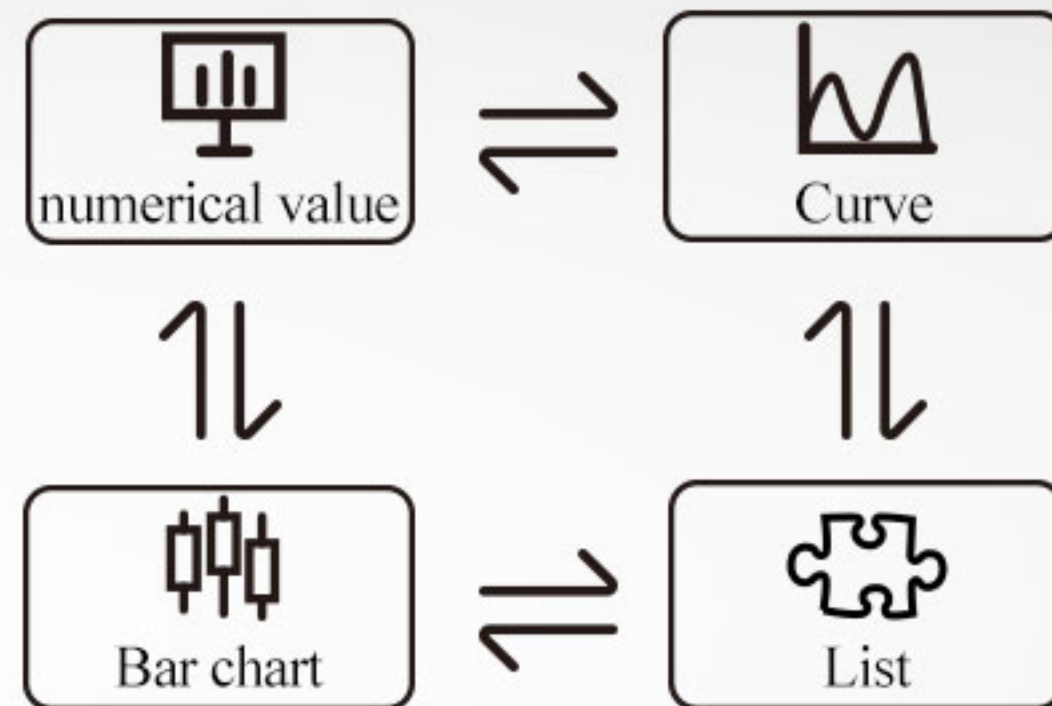
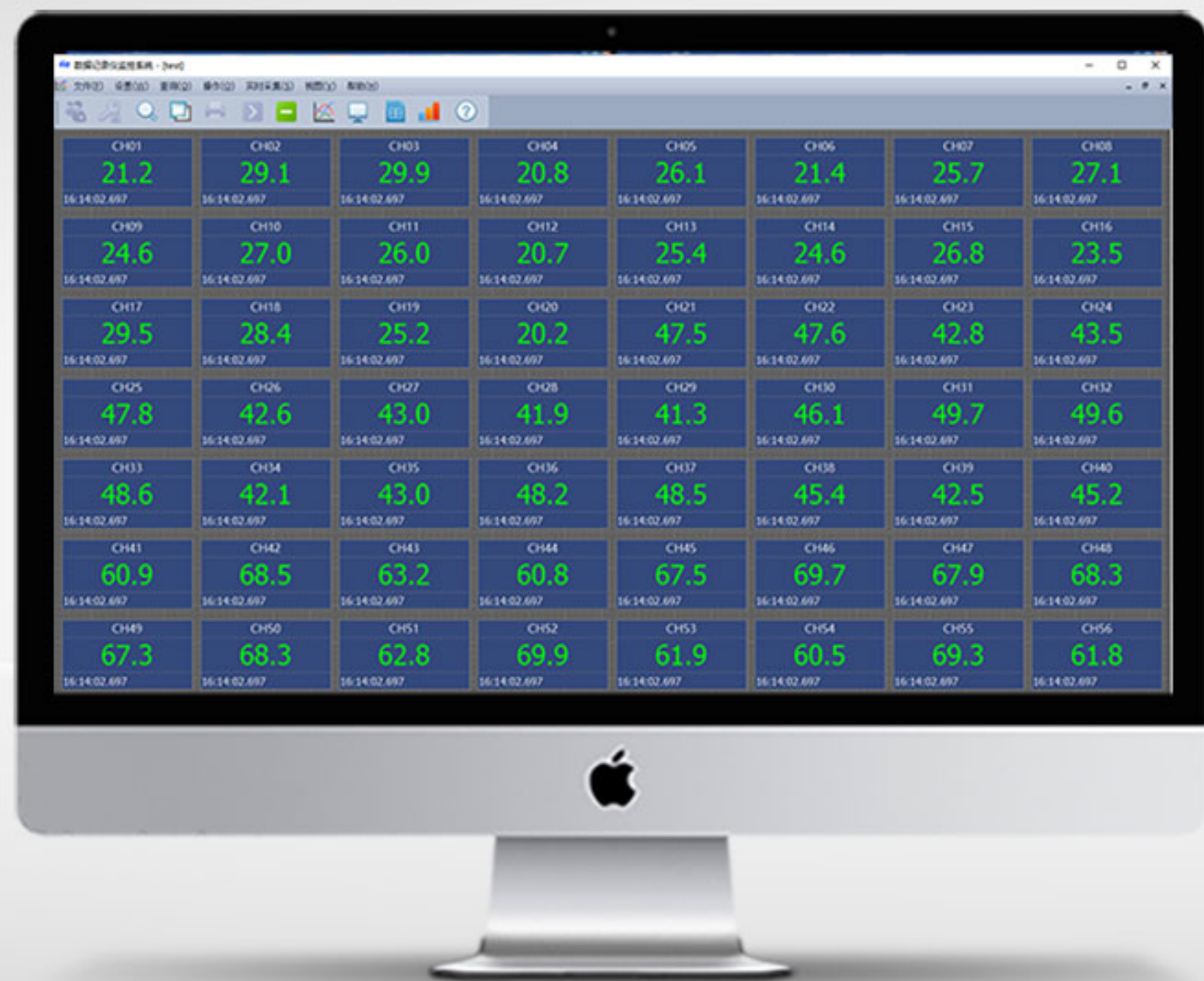
numerical value

Bar chart



Strong master computer monitoring software

Standard RS232 serial port and EtherNet communication | curve and historical data export more convenient



Only need to match 4G / WIFI wireless module

Click connect the could platform, realize computer and wechat remote data-checking

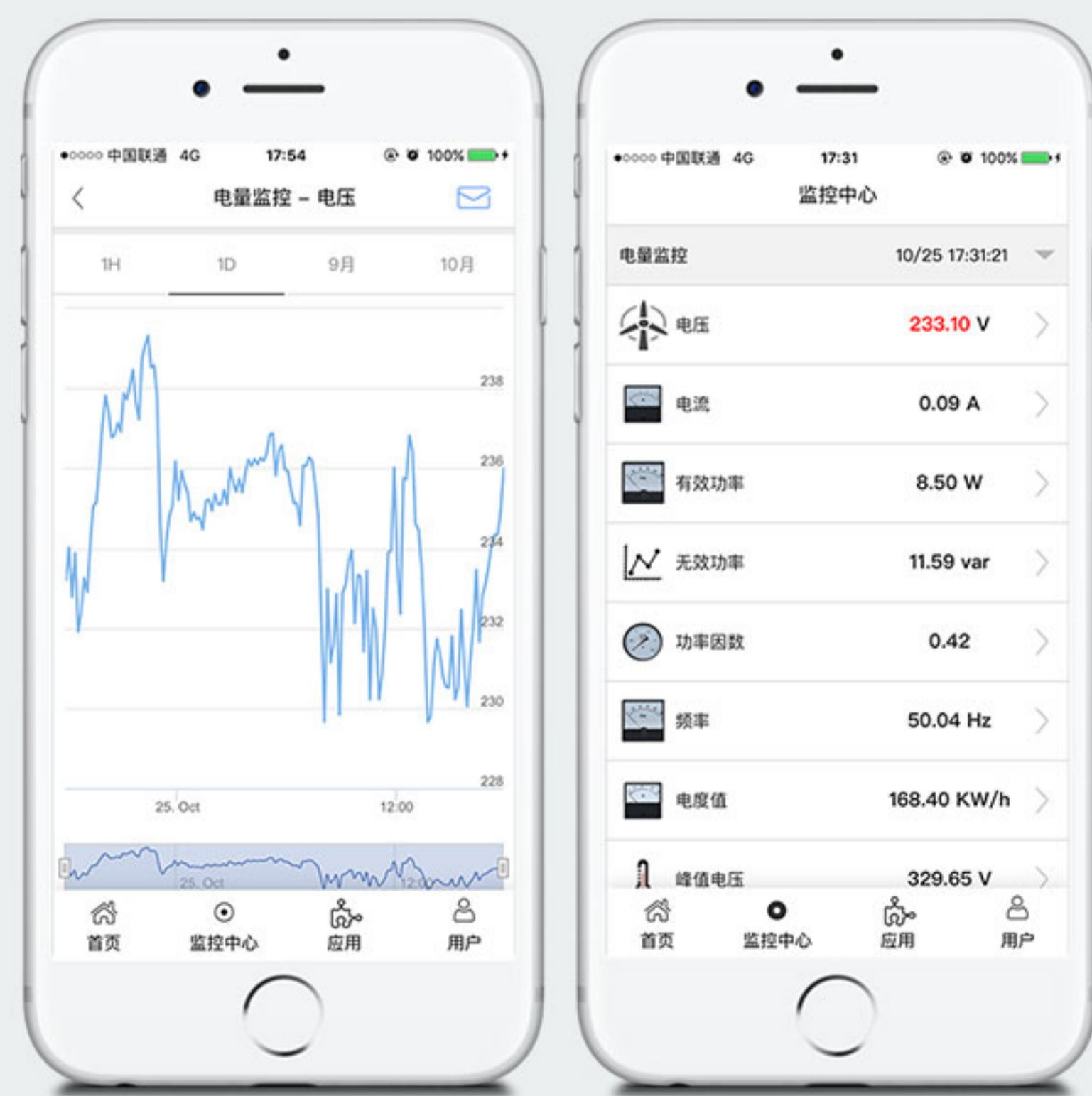


computer and mobile wechat remote monitor



web.toprie.com
Remote IE monitor
Voltage | Temperature | Level | Wind speed | Power
Humidity | Water level | Flow | Pressure | Current

APP/Wechat remote monitor



TP series paperless record could connect the IoT platform via standard EstherNet (WIFI or 4G)

Click and type

web.toprie.com Forever free, Opening IoT platform

Realize remote real-time data checking, history record exporting
Alarm Message sending ect on and let you could monitor devices anytime and anywhere.

Only need to match 4G / WIFI wireless module

Click connect the could platform, realize computer and wechat remote data-checking



computer and mobile wechat remote monitor

web.toprie.com
Remote IE monitor

Voltage | Temperature | Level | Wind speed | Power
Humidity | Water level | Flow | Pressure | Current



APP/Wechat remote monitor



TP series paperless record could connect the IoT platform via standard Ethernet (WIFI or 4G)

[Click and type](#)

web.toprie.com Forever free, Opening IoT platform

Realize remote real-time data checking, history record exporting

Alarm Message sending effect on and let you could monitor devices anytime and anywhere.

Application fields

VARIOUS INDUSTRIES



AGRICULTURE

TRAFFIC



ENVIRONMENTAL PROTECTION



POWER

METEOROLOGICAL



Product dimension

